

3 BEDROOMS

 LIMASSOL GREENS

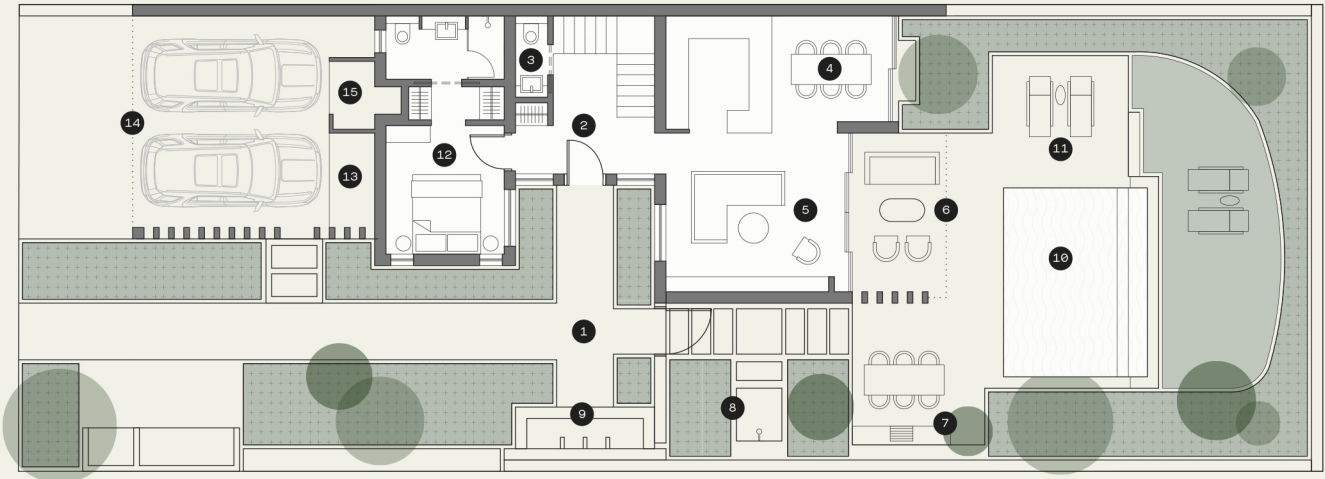
IBIS



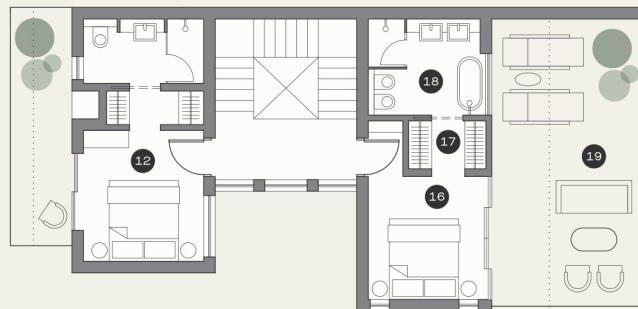
HIGHLIGHTS

- All bedrooms are ensuite. Principal suite with dedicated dressing room and bathroom with his & hers vanity.
- Eco-friendly design featuring double glazing, solar panels, provision for electric vehicle charging
- High Ceilings. Wide and tall window and door openings
- High standard kitchen cabinets/ wardrobes/sanitary ware from European brands. Security and fireproof entrance door
- VRV air cooling system & under floor heating.
- Home automations (smart-home technology) – optional upgrades available.

GROUND FLOOR



FIRST FLOOR



AREAS

01 Entrance courtyard	13 Covered parking (pergola)
02 Entrance hall	14 Provision for electric vehicle charger
03 Powder room	15 Principal suite
04 Kitchen and dining	16 Walk in closet
05 Lounge/living room	17 Principal suite bathroom
06 Lounge & outdoor dining terrace	18 Principal suite terrace
07 Barbeque area	19 Bedroom with ensuite
08 Outdoor shower	
09 Water feature	
10 Swimming pool	
11 Swimming pool terrace/cabana	
12 Technical room	

Plot size	431 - 578m ²
Internal covered area	147m ²
Covered terraces	37m ²
Covered terraces (pergola)	11m ²
Covered parking (pergola)	25m ² (2 cars)
Uncovered terraces	50m ²
Swimming pool	19m ²
Principal suites	1
Bedrooms	2
Ensuites	3

The areas are indicative for this Townhouse type and may vary according to the plot.